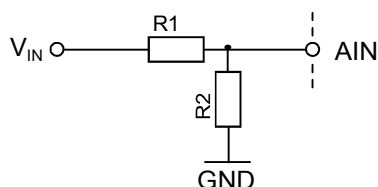


## MSR 145 ANALOG - INPUT

### VOLTAGE DIVIDER

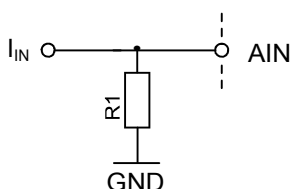
- Analog - Input 5V, 10V, 12V, 24 V



R1 & R2:                      • Resistance Values


$V_{IN}$	R1	R2
5 V	51 k $\Omega$	75 k $\Omega$
10V	91 k $\Omega$	39 k $\Omega$
12V	130 k $\Omega$	43 k $\Omega$
24V	150 k $\Omega$	22 k $\Omega$

- Analog - Input 0...20 mA, 4...20mA



R1 :                                      • Resistance Values

$I_{IN}$	R1
0...20 mA	150 $\Omega$
4...20mA	150 $\Omega$

<b>MSR 145 • Analog- Input</b>	GEZ: JA	DATUM: 05.11.2009	
	GEPR: WE	DATUM: 05.11.2009	
TITEL:	<b>BX1112</b> <b>BX1114</b>	<b>1.1</b>	<b>1 / 1</b>
	ART. NR:	REV:	SEITE:
<b>MESSmatik AG</b>	Feldstrasse 78 • CH-4123 Allschwil • www.messmatik.ch		