

DaqPRO Software

Auf Windows basierende Software, 2000 SP3/2003/XP SP2/Vista, Internet Explorer 5.01 oder höher

Schneller Daten - Download vom DaqPRO-Logger

Darstellung der Daten in numerischen oder grafischen Anzeige-Formen

Grafisches Analyse-Tools, wie Zoomfunktionen und Cursor

Ablage von ausgewählten Daten / Ausdruck aus Drucker der gesammelten Daten / Direkter Datenexport ins Excel

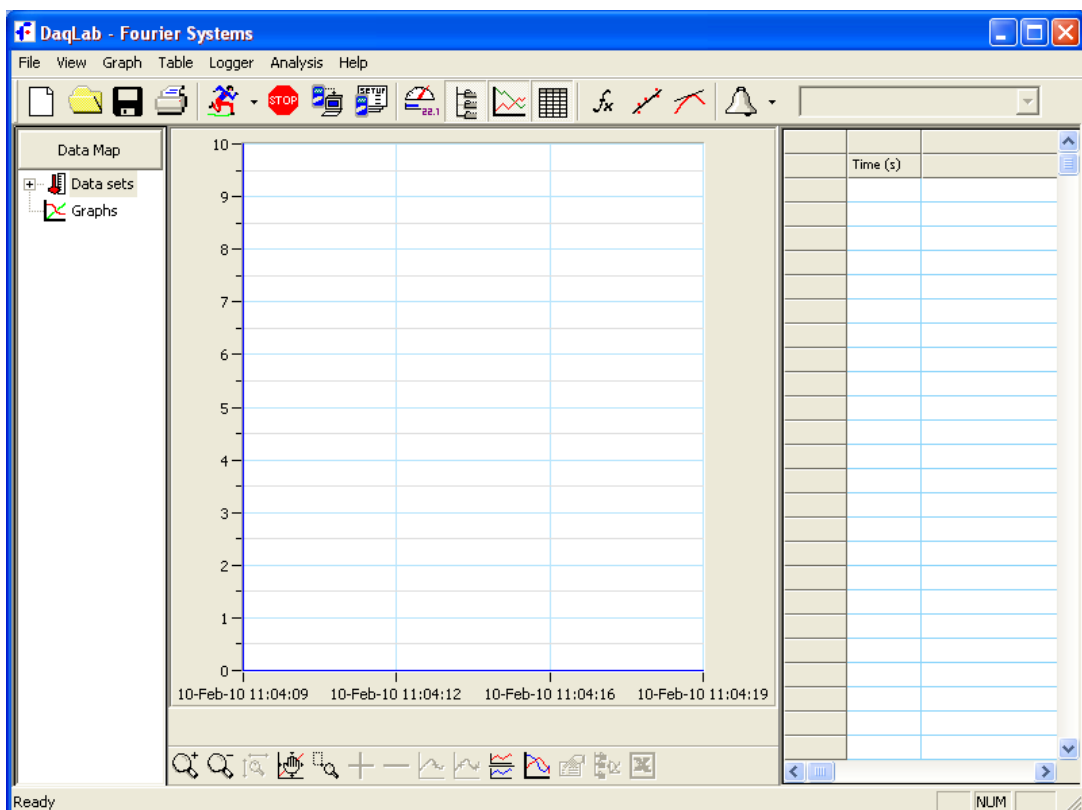
OnLine - Datenabfrage und Anzeige der Daten in Echtzeit

Vereinigende Datenprozess Aufbereitungs – Funktionen

Kalibration des DaqPRO-Loggers

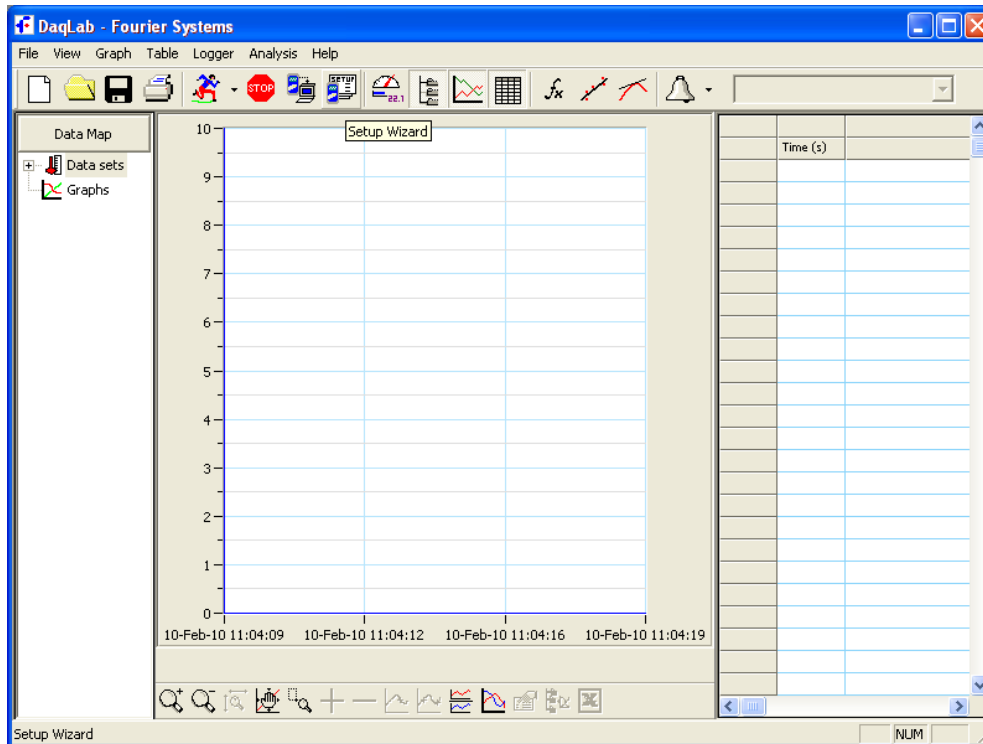
Definition von neuen Sensoren

Startseite

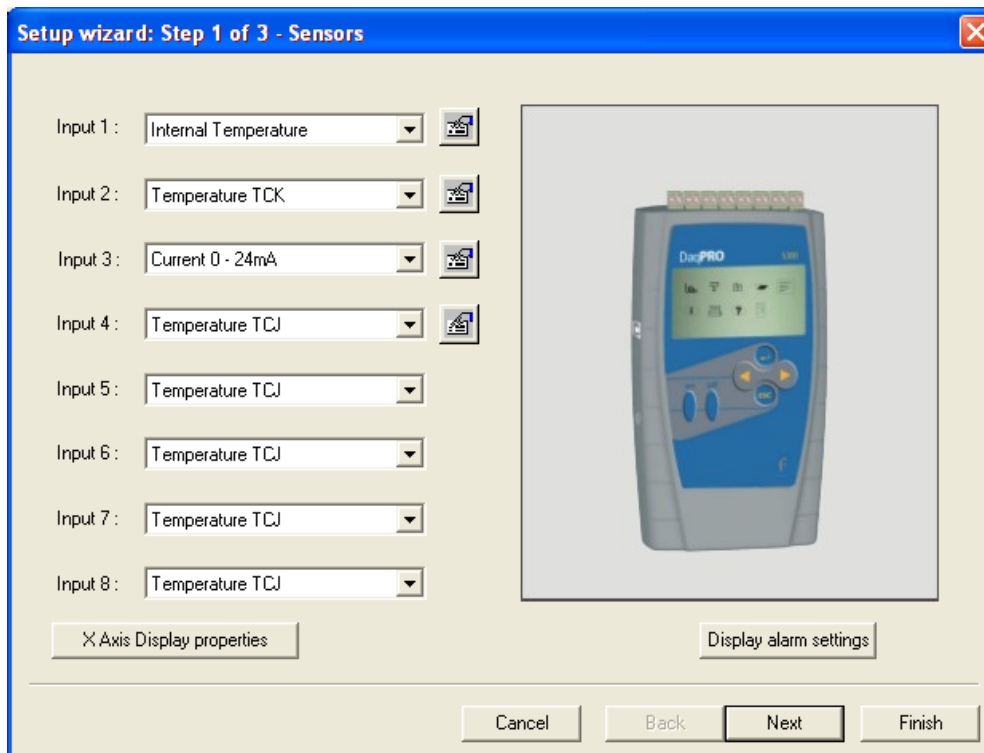




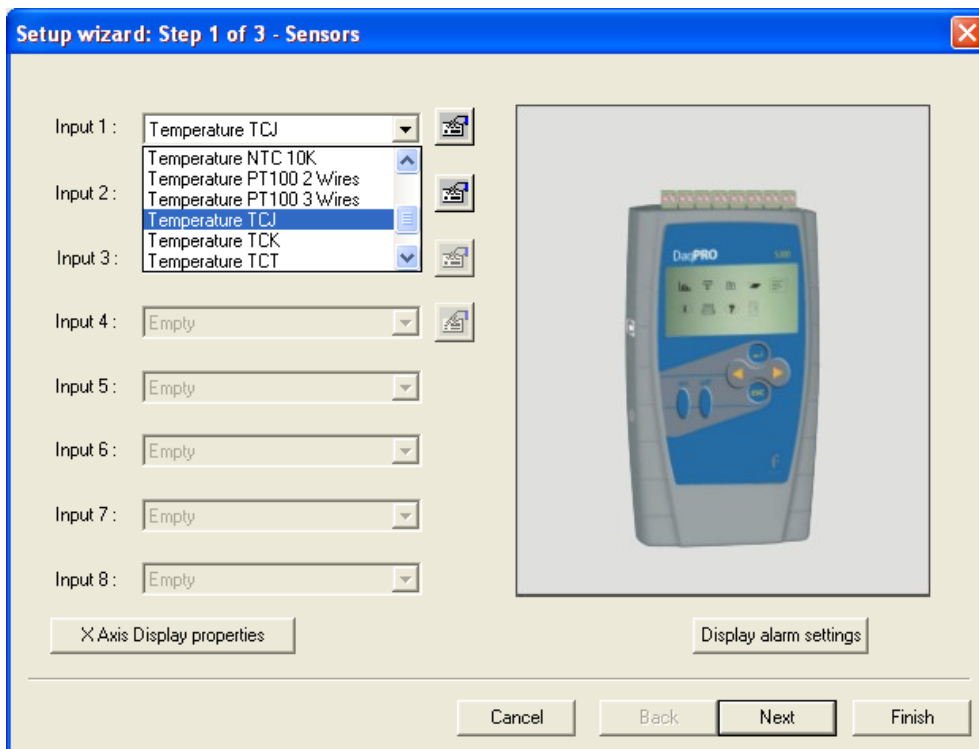
Setup Wizard – Programmieren des DaqPRO Loggers



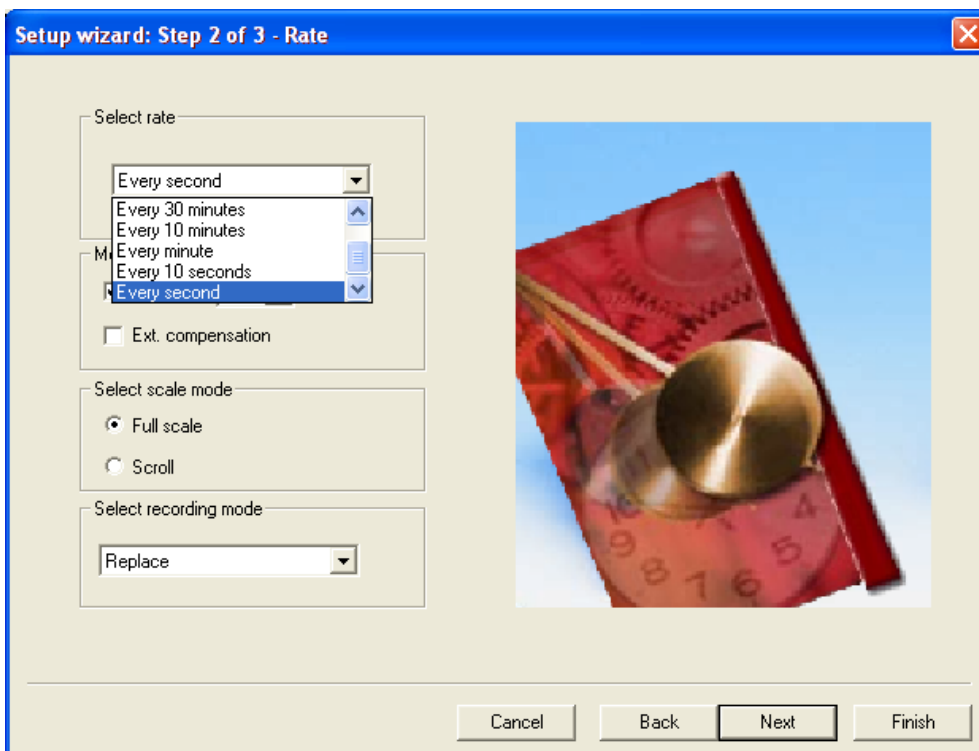
Programmieren des DaqPRO 1. Schritt



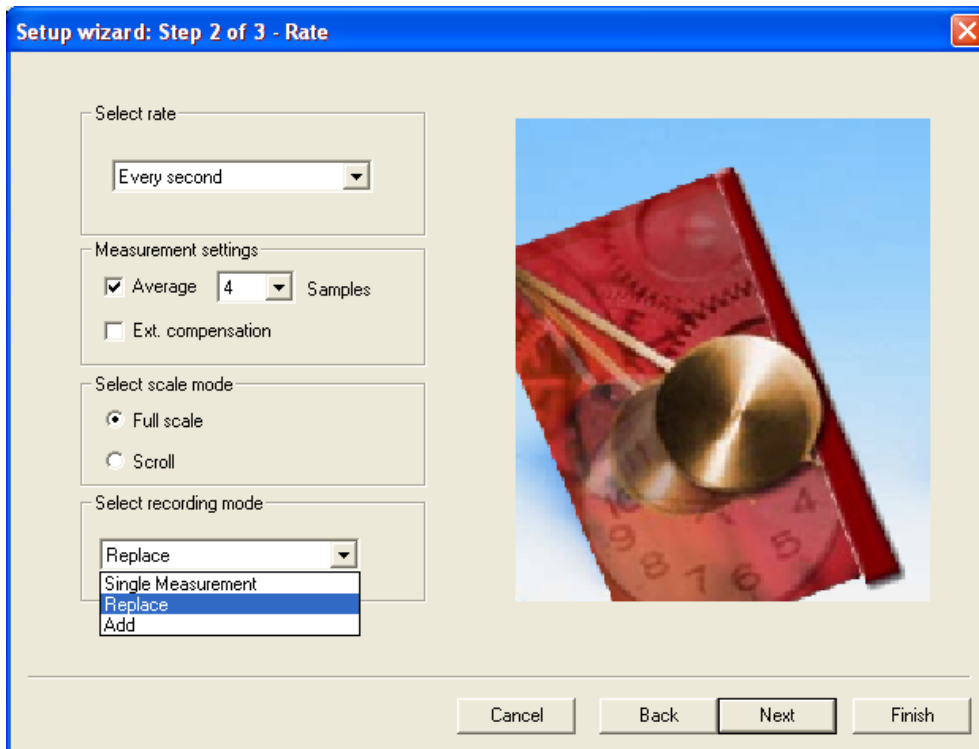
Programmieren des DaqPRO 1. Schritt – Auswahl des Sensors-Typ's



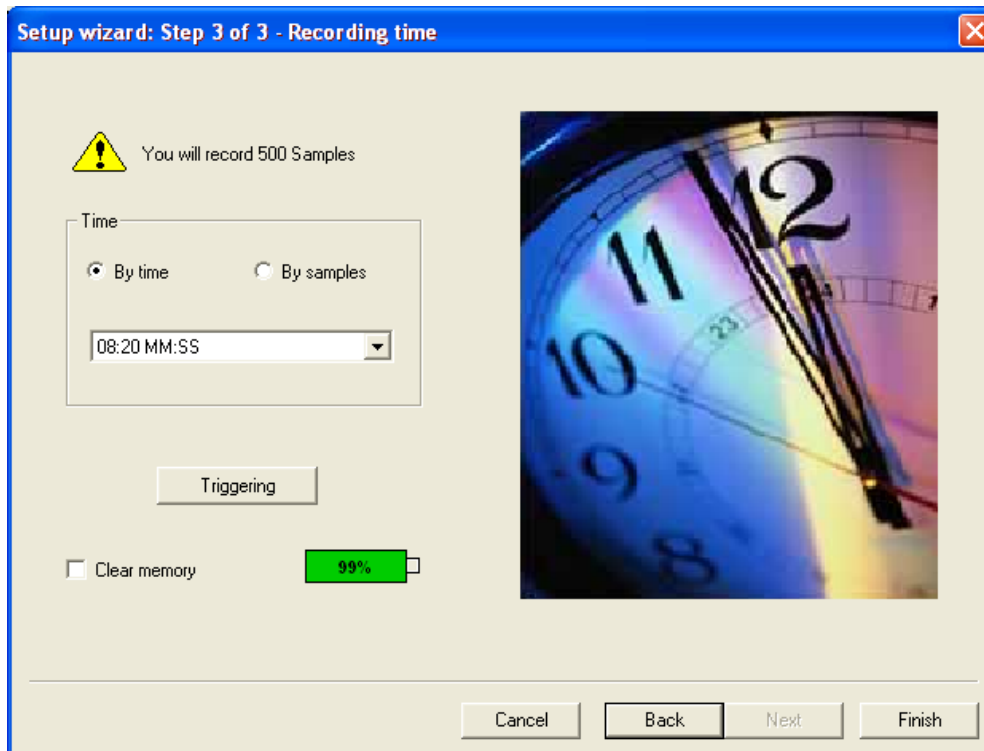
Programmieren des DaqPRO 2. Schritt - Messinterval



Programmieren des DaqPRO 2. Schritt – Speicherverhalten (wenn Speicher voll, Ringspeicher, überschreibt alte Messungen)

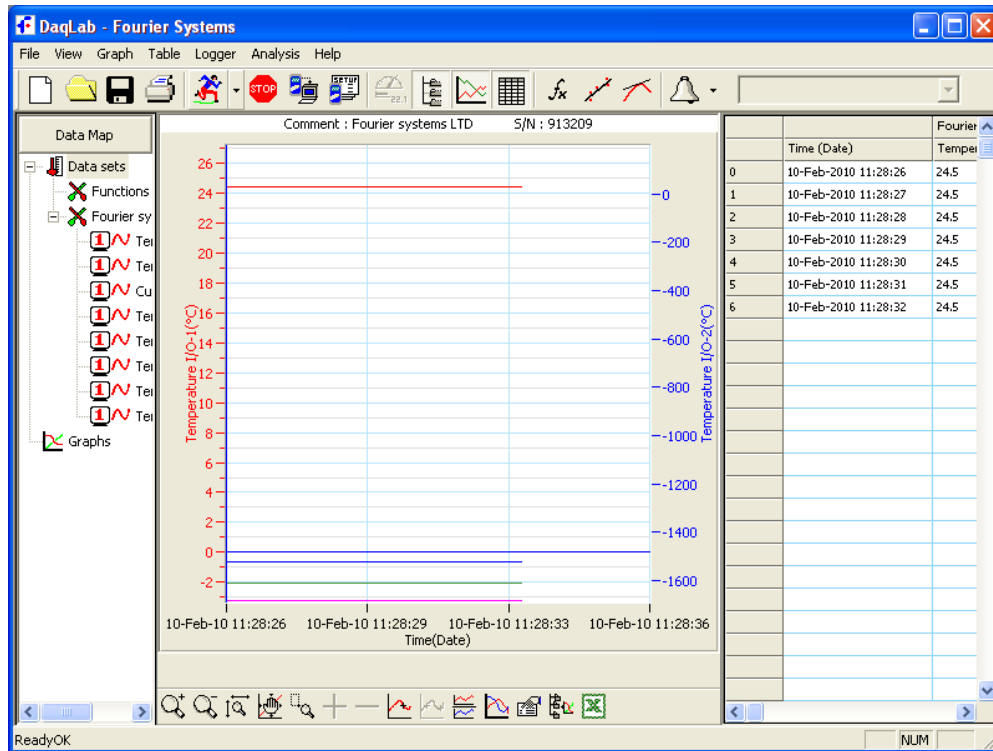


Programmieren des DaqPRO 3. Schritt – Startzeit, Trigger-Start, freie Speicherkapazität

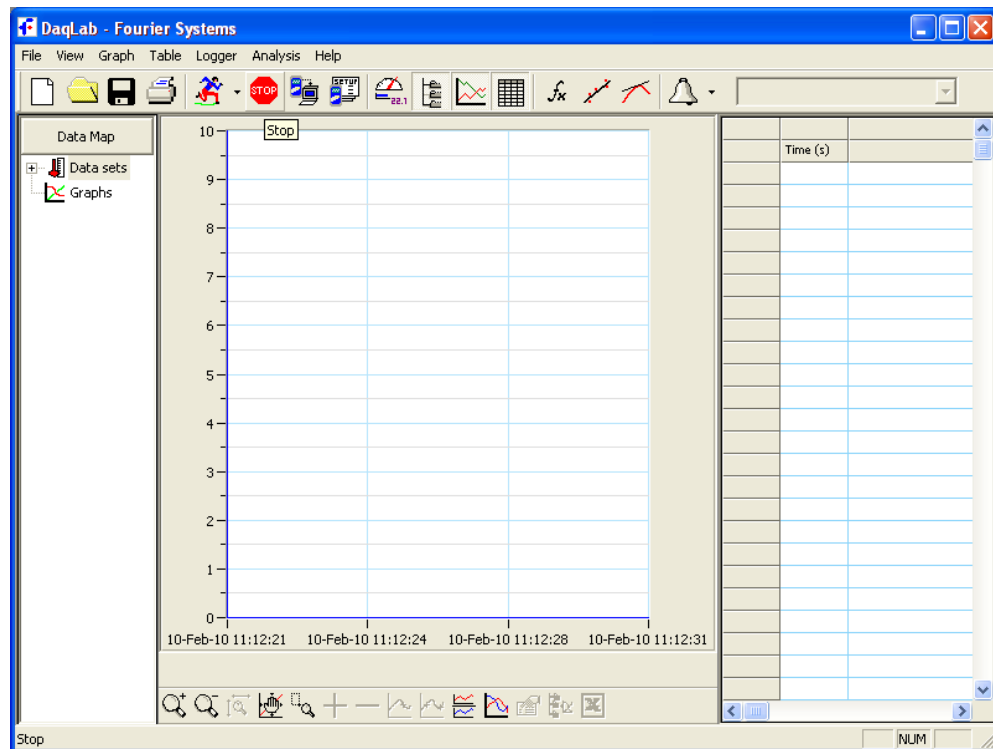




Die Messung starten – die Messung in Echtzeit mit PC-Kabel ersichtlich

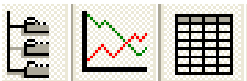
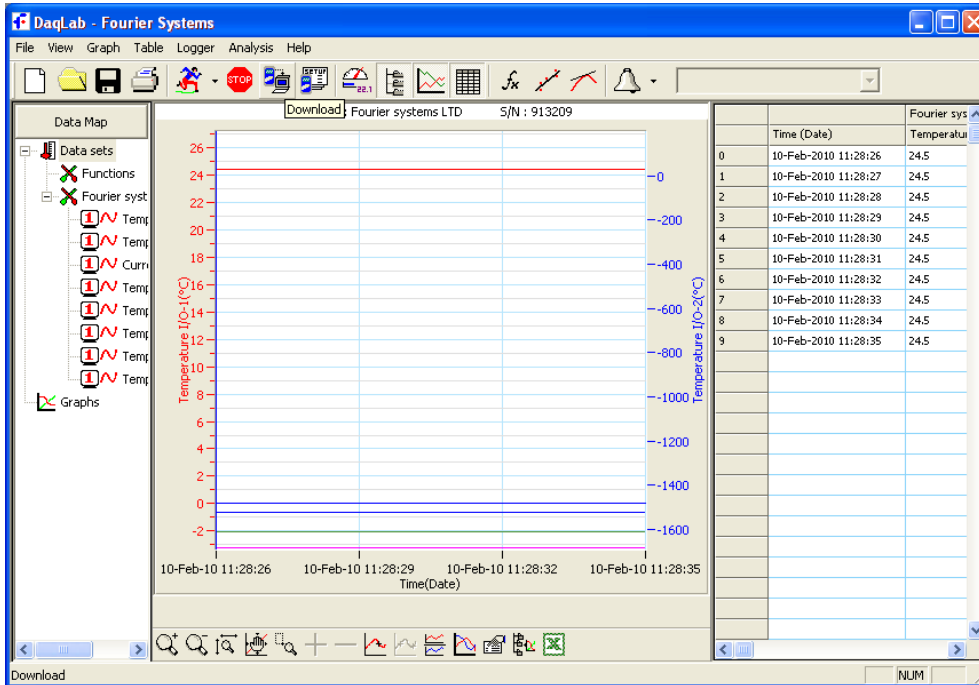


Die Messung des Loggers stoppen

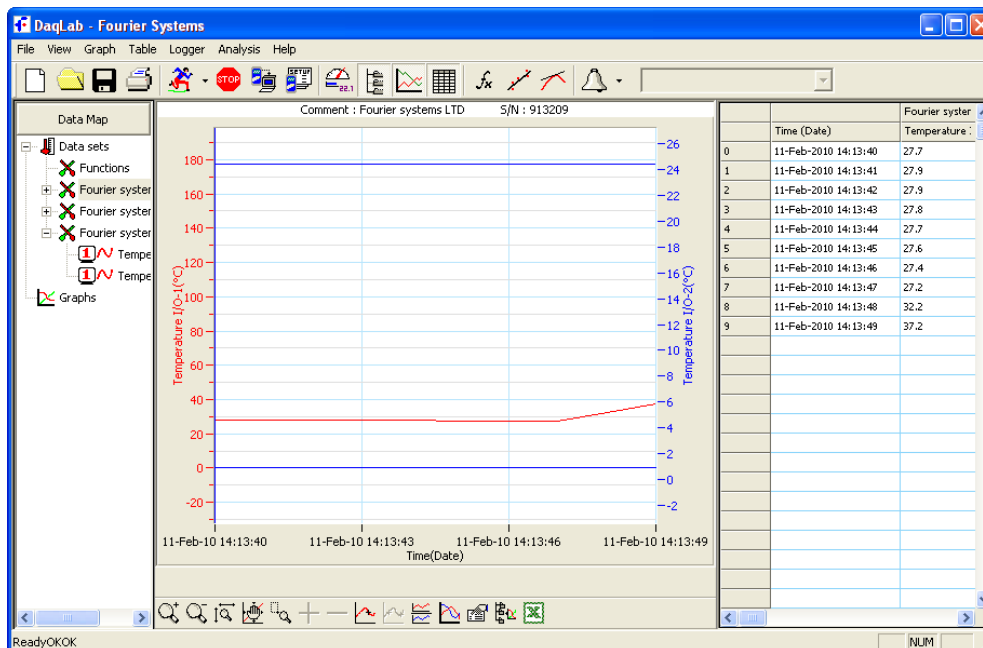




Download – Herunterladen der auf dem Logger gespeicherten Messdaten



Die Messdaten mit Übersicht der Sensor-Steckplätze (links), grafische Ansicht (mitte) und Tabellenform (rechts)





Ansicht der Messdaten nur als Tabelle (auch nur Grafik möglich)

DaqLab - Fourier Systems

File View Graph Table Logger Analysis Help

	Time (Date)	Fourier syste	Fourier syste
		Temperature :	Temperature :
0	11-Feb-2010 14:13:40	27.7	24.4
1	11-Feb-2010 14:13:41	27.9	24.4
2	11-Feb-2010 14:13:42	27.9	24.4
3	11-Feb-2010 14:13:43	27.8	24.4
4	11-Feb-2010 14:13:44	27.7	24.4
5	11-Feb-2010 14:13:45	27.6	24.4
6	11-Feb-2010 14:13:46	27.4	24.4
7	11-Feb-2010 14:13:47	27.2	24.4
8	11-Feb-2010 14:13:48	32.2	24.4
9	11-Feb-2010 14:13:49	37.2	24.4

Ready NUM



Anzeige Modus der Messdaten, Zeiger, Ziffern oder Säule

Meter Setup

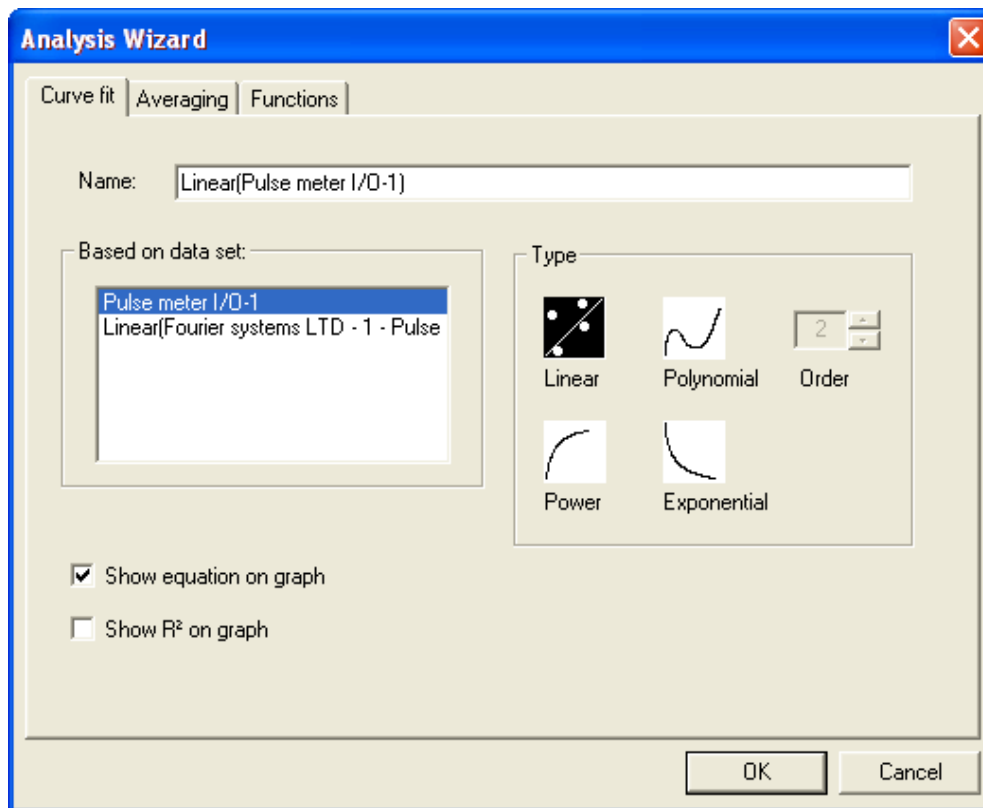
	Type	Data set
Meter 1:	None	Input 1 : Temperature
Meter 2:	None Analog Bar Digital	Input 1 : Temperature
Meter 3:	None	Input 1 : Temperature
Meter 4:	None	Input 1 : Temperature

Display title bar

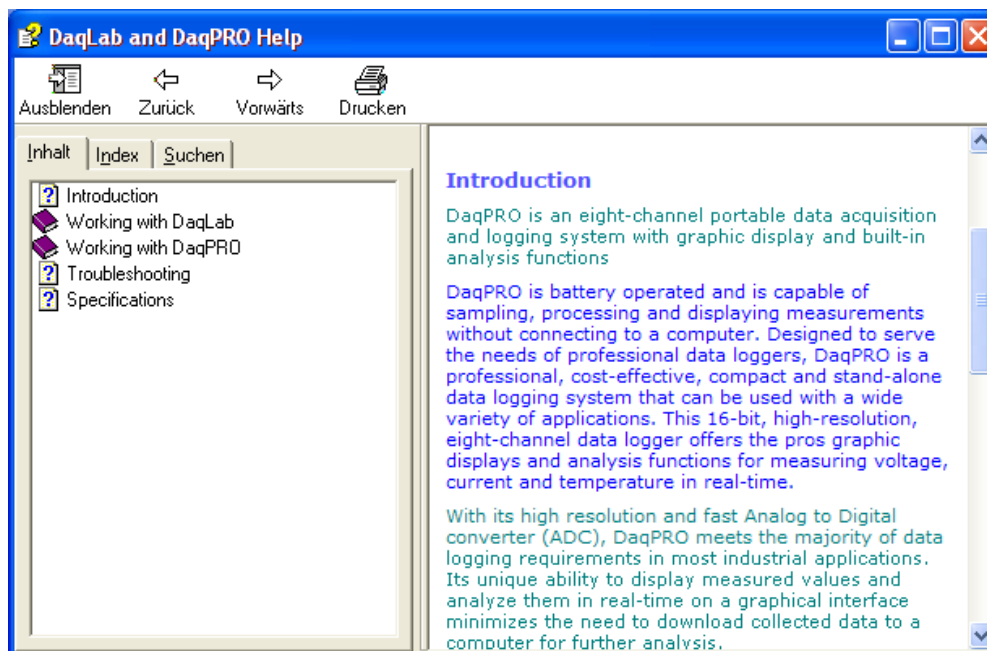
Remove all

OK Cancel

Einstellungen der Kurvengrafik



Ausführliche Hilfedatei



Kalibration

Kalibrations – Passwort für Schutz vor Manipulation

The screenshot shows a dialog box titled "Calibration Password" with a close button (X) in the top right corner. The main text inside the dialog reads "Insert password to enable calibration". Below this text is a label "Password :" followed by a text input field. At the bottom of the dialog, there are three buttons: "OK", "Cancel", and "Change Password".

Kalibration der Sensoren

The screenshot shows a dialog box titled "Sensor properties (Current 0 - 24mA)" with a close button (X) in the top right corner. The dialog has two tabs: "Measurement" and "Calibration", with "Calibration" being the active tab. Inside the dialog, there is a section labeled "Calibration values:" which contains a table of input fields. The table has two columns: "Reference value:" and "Logger value:". The rows are "First value:" and "Second value:". The "First value:" row has input fields containing "0" for both "Reference value:" and "Logger value:". The "Second value:" row has input fields containing "24" for both "Reference value:" and "Logger value:". Below the table is a "Restore defaults" button. At the bottom of the dialog, there are "OK" and "Cancel" buttons.

	Reference value:	Logger value:
First value:	0	0
Second value:	24	24